

# DL220

## WHEEL DOZER

Operating Weight: 20113 Kg



The QSL9 from Cummins takes you to a whole new level of power and versatility, with in-cylinder technology that maintains a compact, simple and cost-effective solution. This engine delivers performance that meets the challenge of a wide range of tough industrial applications. With ratings up to 365 hp (272 kW) and a torque rise of up to 50%, the QSL9 engine delivers the power you need while minimising emissions. At the same time, it provides better cold starting and runs 50% quieter for increased operator comfort. The advanced engine design ensures maintenance is kept to an absolute minimum

Designed to provide the operator superior value and reliability, while meeting stringent worldwide emissions standards. • Meets Tier 3/Stage IIA emissions levels using in-cylinder combustion technology without the need for external components • Compatible with high-sulfur fuels for worldwide use • Uses proven major components for a long life to overhaul • The simplicity of design delivers excellent reliability and ease of servicing • Efficient fuel systems deliver low levels of fuel consumption For equipment manufacturers, the QSL9 is designed to fit your machine. Cummins' engineers will help define your specification for the best and most cost effective installation. The electronic calibration will then be tailored to the exact duty cycle and operation of the machine. This expertise drives the best solution for the OEM and the end user.

Hydraulics and Controls – State of the art electro-hydraulic system provides low effort, fine control with fast cycle times. All-in-one joystick helps keep eyes on the work. Operator can adjust machine responsiveness with the push of a button, which allows the operator to set up the machine exactly the way they want it based on the application. High Flow option allows for the use of even the most demanding work tools.

The Torque Converter and Transmission System of MTZ Wheel Dozer, DL220 has power shift and 4 forward and 4 reverse and Max. Travel Speed is over 40 km/hr. The Axle system gives the maximum power to maintain its movability for the customer's operation. MTZ Wheel Dozer DL220 crates the maximum mobility to perform at its best.

Cab – All around visibility is further enhanced with the availability of a rearview camera. The deluxe cab ensures operator comfort with a heated, air suspension seat and easy to use controls. Available features such as Implement and Hystat Aggressiveness, Ride Control, Lift and Tilt Kickouts, Fork/Bucket Mode and Rimpull Control allow the operator to customize the machine via a soft touch keypad.

Drivetrain MTZ Dozer Smooth shifting and powerful acceleration is matched with modulated hydrostatic braking in the inching/braking pedal, creating a rhythm for material moving. Creeper and electronic engine speed control makes broom and snow blower work easy. Operator tunes between smooth or aggressive shifting with the push of a button.

Serviceability – Extended service intervals and excellent service access make daily checks quick and easy allowing you to get to work sooner. Efficiently Powerful with its high full turn tipping loads, powerful breakout forces and increased engine power delivers a balanced solution for all customer applications.

Standard Fuel Savings Features such as Eco Mode, On Demand Cooling Fan, and Auto Engine Idle Shutdown make the 920 both powerful and fuel efficient.

## Specifications

### Engine

|                      |              |                     |
|----------------------|--------------|---------------------|
| Engine Model         | CUMMINS QSL9 |                     |
| Maximum Gross Power: |              |                     |
| Maximum Engine Speed | 2100 RPM     |                     |
| Rated Net Power:     | 272 kW       | 365 HP              |
| Rated Engine Speed   | 1100 RPM     |                     |
| Displacement         | 8.9 L        | 544 in <sup>3</sup> |
| Bore                 | 114 mm       | 4.48 in             |
| Stroke               | 144 mm       | 5.66 in             |

### Engine (continued)

Maximum Gross Torque 1113 N-m @1500 RPM

Engine type: In-line, 6-cylinder

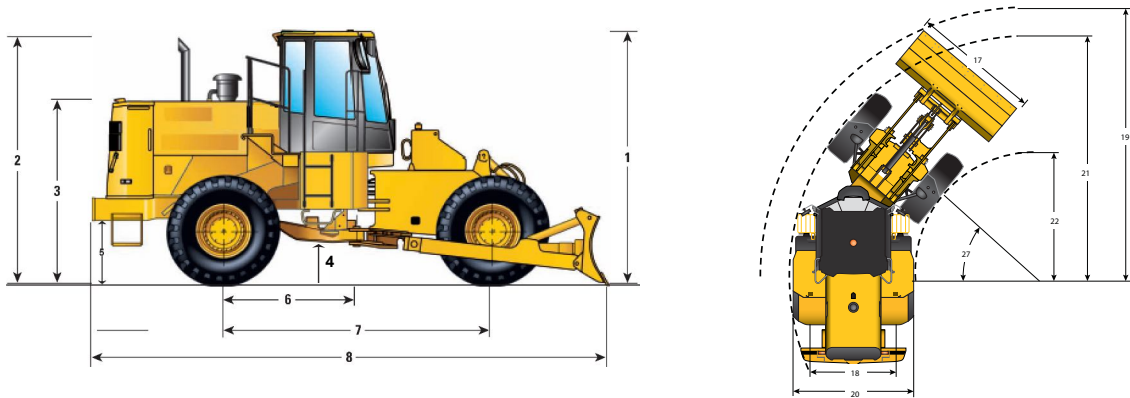
Aspiration: Turbocharged/ charge air cooled

Oil system capacity 24 U.S./Canada QT, 22.7 liters

High-pressure common-rail fuel system – Allows multiple injection events for cleaner, quieter operation with consistent performance at every rpm. Also improves cold-weather starting.

- Engine meets Tier 3 / EURO III Emission Standards.
- Net power advertised is the power available at the flywheel plus front drive implement pump when the engine is equipped with fan, air cleaner, muffler and alternator.

Dimensions and Operating Specifications(All dimensions are approximate. Dimensions vary with bucket and tire choice.)



1. Height to Top of Cab 3450 mm

2. Height to Top of Exhaust Pipe 3304 mm

3. Height to Top of Hood 2373 mm

4. Height to Bottom of Ladder 441 mm

5. Ground Clearance 350 mm

6. Center Line of Rear Axle to Edge of Bumper 1871 mm

7. Wheelbase (mm): 3400

8. Total Length (mm): 7200

\* Lifting Capacity: 800 mm

17. Blade Width: 3600 mm

19. Turning Radius Over Bucket : 7166 mm

20. Overall Width : 3200 mm

21. Turning Radius: 4877 mm

22. Turning Radius inside of Tires: 2583 mm

\* Wheel track (mm): 2240

\* Maximum lift height of dozer blade: 1060

\* Maximum down depth of dozer blade(mm): 400

\* Blade Height: 1000 mm

\* Blade Type: Straight blade and Tilting

\* Gradeability: 20%

## Steering system

8. Blade Capacity: 4.5 m<sup>3</sup>

Pattern Full hydraulic steering system, Articulated type

Min. turning radius(outside of bucket): 7268mm

Max. turning angle: 35°±1

## Implement hydraulic system

Displacement: 250L/min

System working pressure: 20.3MPa

Distribution device model: 32

Pilot valve model: DJS

Tire size 23.5-25

## Refill Capacity

Fuel Tank Capacity: 500 Ltr.

Hydraulic tank capacity: 204 Ltr.

## Brake system

Brake system: Air assisted oil disc on four wheel

Parking brake: Air cutting control inner eapand hoof

## Transmission System

Reverse speeds

Forward 1: 5.9 km/hr.

Forward 2: 10.4 km/hr.

Forward 3: 18.1 km/hr.

Forward 4: 31.3 km/hr.

Reverse 1: 6.7 km/hr.

Reverse 2: 11.8 km/hr.

Reverse 3: 20.6 km/hr.

Reverse 4: 35.5 km/hr.

## Electrical System

2x12 Volts heavy duty battery